

ENGINE & PROPULSION

Work for UAE Operators

February 2023





PAXMAN

- Apprenticeships
- Colchester Base
- Development Section
- Field Service
- Parts Manufacture
- UK Engines – Ruston, Mirrlees, Dorman

PROUD TO BE SUPPORTING:



MAERSK





- Engine overhauls
- Breakdown response
- Service agreements

5000



- Propulsion overhauls
- Thrusters
- Shaft seals



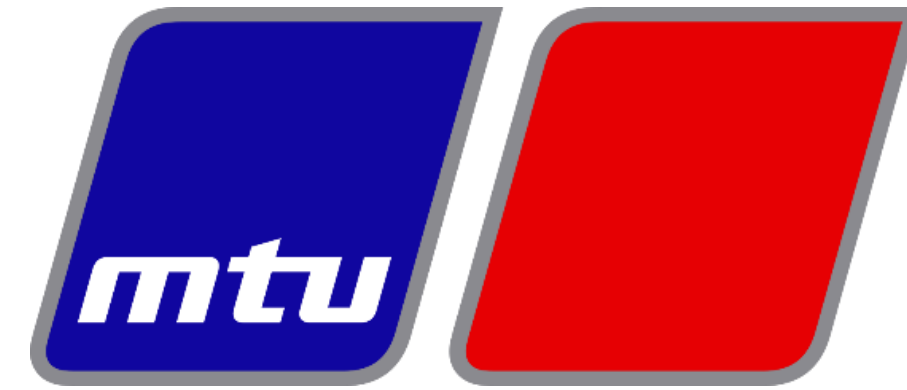
- Parts supply
- Assemblies
- Napier/ABB



- Engine spares
- Filtration
- Transmissions

PROUD TO BE SUPPORTING:





A Rolls-Royce
solution



PROUD TO BE SUPPORTING:





- D1822
- D232
- D234
- D440
- D441
- D444
- D484
- D500
- D501
- D510
- D601
- D602
- D604
- D604B
- D616
- D620
- D645



- D350
- D358
- D528
- D540
- D545
- D628
- D640
- D816



- DR0210
- F240
- SW280
- TM410
- TM620



- A20
- AL20
- A25
- AS25
- AT25
- S20
- S20(U)



- UD150
- UD18
- UD23
- UD25



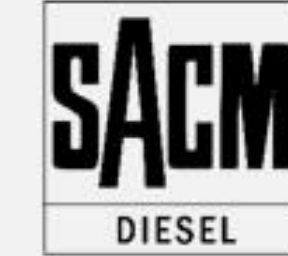
- GMT 210
- GMT 230
- GMT 320
- GMT 420



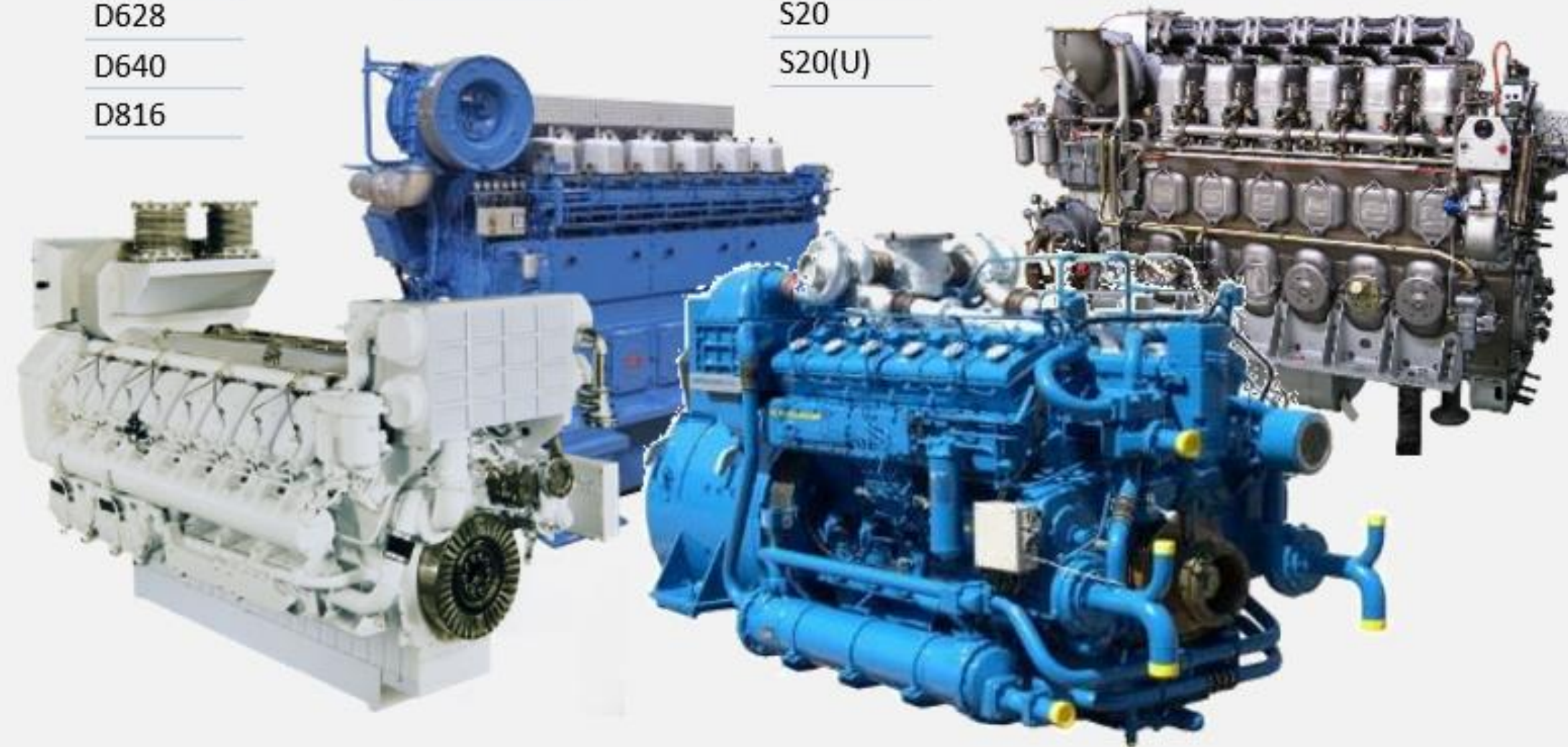
- Crepelle 26



- 190



- UD30



- AC
- AX
- 28



- F10
- F20
- F30
- WN25
- WN25DF
- WN25SG



- Vasa 22
- ABC
- MD/HF
- 22/26



- Vasa 14
- Vasa 24

PROUD TO BE SUPPORTING:

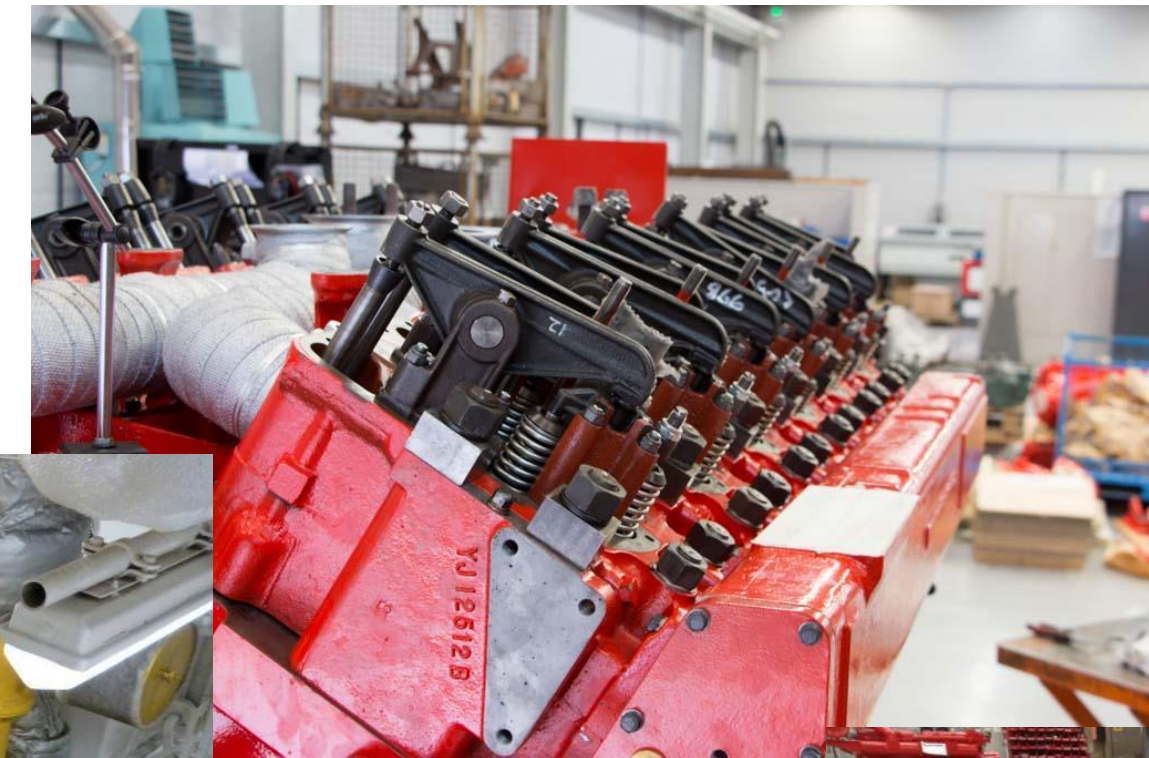
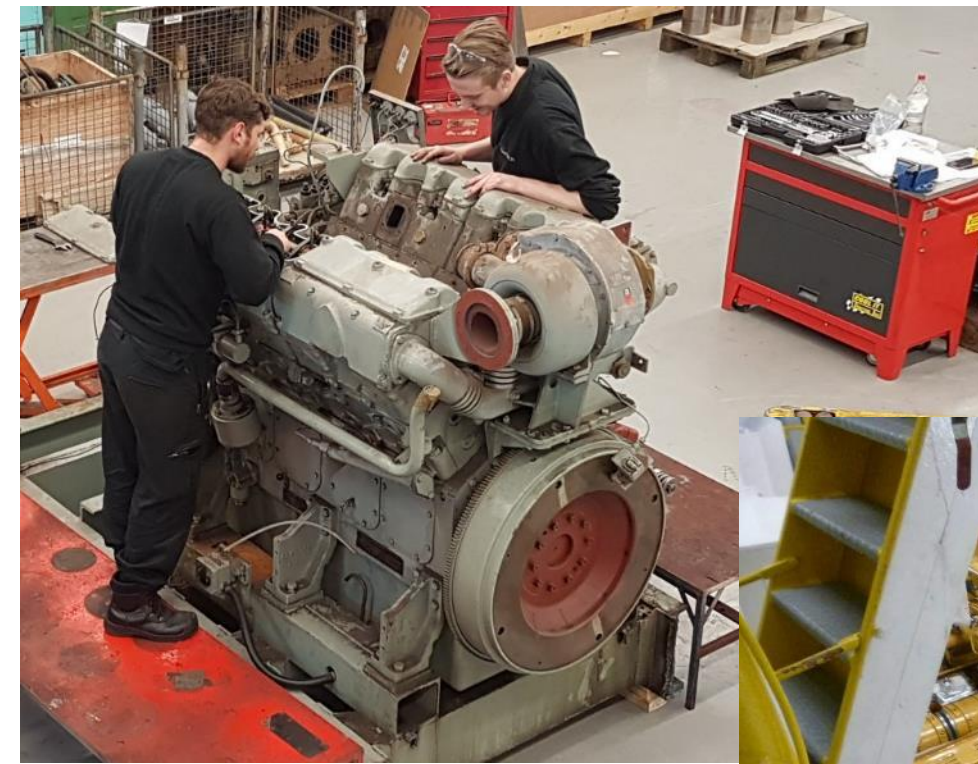


MAERSK



ENGINES COVERED

- On-site overhaul programmes
- Engine source, overhaul, test, install
- Critical spares supply

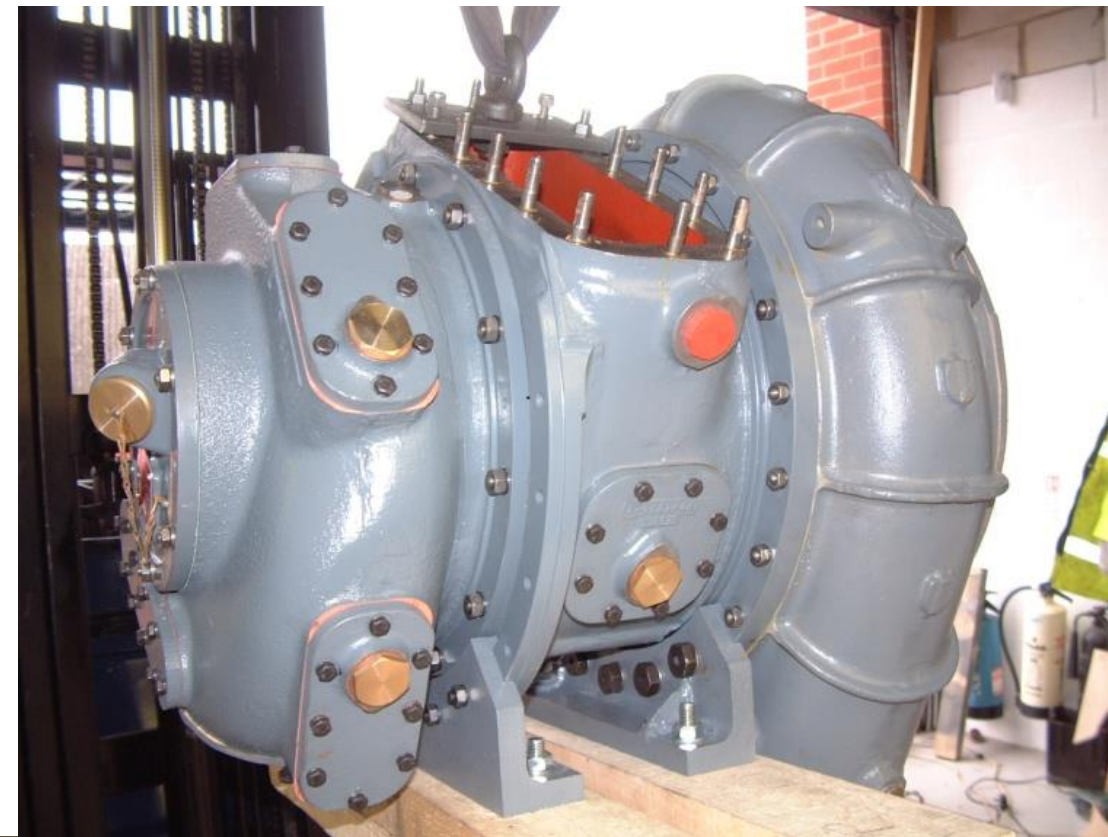


PROUD TO BE SUPPORTING:



MAERSK





OVERHAULS

- Governor overhauls
- Turbocharger services
- Fuel injection
- Manufacture
- Re-Engineering

PROUD TO BE SUPPORTING:



MAERSK



FURTHER HELP

- Training
- Manufacturing
- Maintenance Reviews
- Health Checks
- Panels

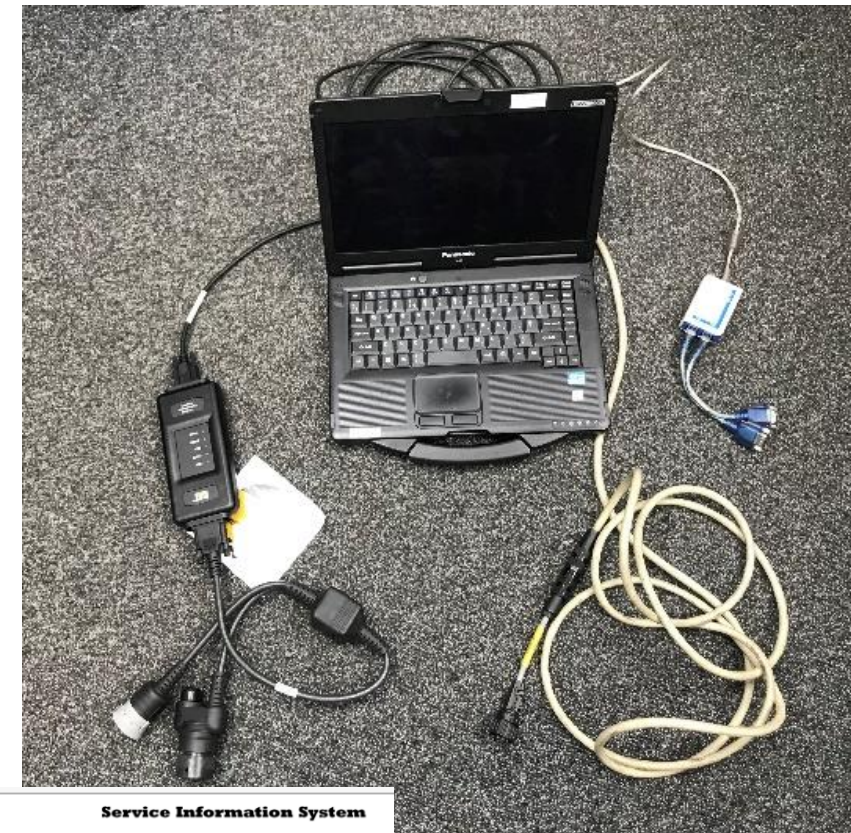


PROUD TO BE SUPPORTING:



MAERSK





Service Information System

3512 INDUSTRIAL ENGINE
 Engine Serial Number - 49Y00692 (Build Date - 26/03/1993, Test Date - 31/03/1993, Ship Date - 12/04/1993)

View Latest Kit Information

ENGINE - ENTIRE GROUP (49Y00692)

Qty.	NPR	Note	Part No.	Change Level	Req. Qty	Part Name
						PART NUMBERS
			1 PL2954	23	001	3512 TA INDUSTRIAL ENG-2WAC
	MPS	IY	09-5805	32	001	ENGINE AR
	MPS	IY	09-9302	07	001	AIR CLEANER GP
	MPS	IY	09-9204	04	001	WIRING GP-ENGINE
	MPS	I	SR-2506	00	001	LITERATURE GP
	MPS	IY	28-0508	03	001	CONTROL GP-GOVERNOR
	MPS	IY	28-9532	03	001	METER GP-SERVICE
	MPS	IY	09-9532	04	001	GUARD GP-DAMPER
	MPS	IY	09-0848	01	001	RAIL GP-ENGINE SUPPORT
	MPS	IY	26-3149	00	001	TACHOMETER GP-ELECTRIC
	MPS	IY	29-8549	05	001	ADAPTER GP-AIR CLEANER
	MPS	IY	29-6885	10	001	SWITCH GP-COOLANT LEVEL
	MPS	I	PA3289	04	001	TANK GP - EXPANSION
	MPS	IY	09-7222	09	001	TANK GP-EXPANSION
	MPS	IY	09-8282	05	001	CONNECTION GP-WATER
	MPS	IY	102-5694	01	001	HOUSING & REGULATOR GP
			1 PA0929	04	001	FLANGE AND EXHAUST EXPANDER
	MPS	IY	29-6962	05	001	FITTING GP-EXHAUST
	MPS	IY	29-7822	02	001	FLANGE GP-EXHAUST
			1 09-7913	01	001	WATERCOOLED TURBO/MANIFOLD AR.
	MPS	IY	09-2438	05	001	LINES GP-FLEXIBLE FUEL
			1 PL4349	05	001	FILTER GP-DUPLEX FUEL - LH
	MPS	IY	28-8322	03	001	LINES GP-INSTRUMENT PANEL
	MPS	IY	28-9242	03	001	FILTER GP-FUEL
			1 PA0119	05	001	FILTER GP - OIL - DUPLEX - L
	MPS	IY	09-9968	06	001	FILTER GP-ENGINE OIL
	MPS	IY	29-9262	01	001	LINES GP-INSTRUMENT PANEL
			1 PA1813	04	001	TWO SIDED FRONT HOUSING
	MPS	IY	29-3204	02	001	WORKING GP-FRONT

OEM BACKING

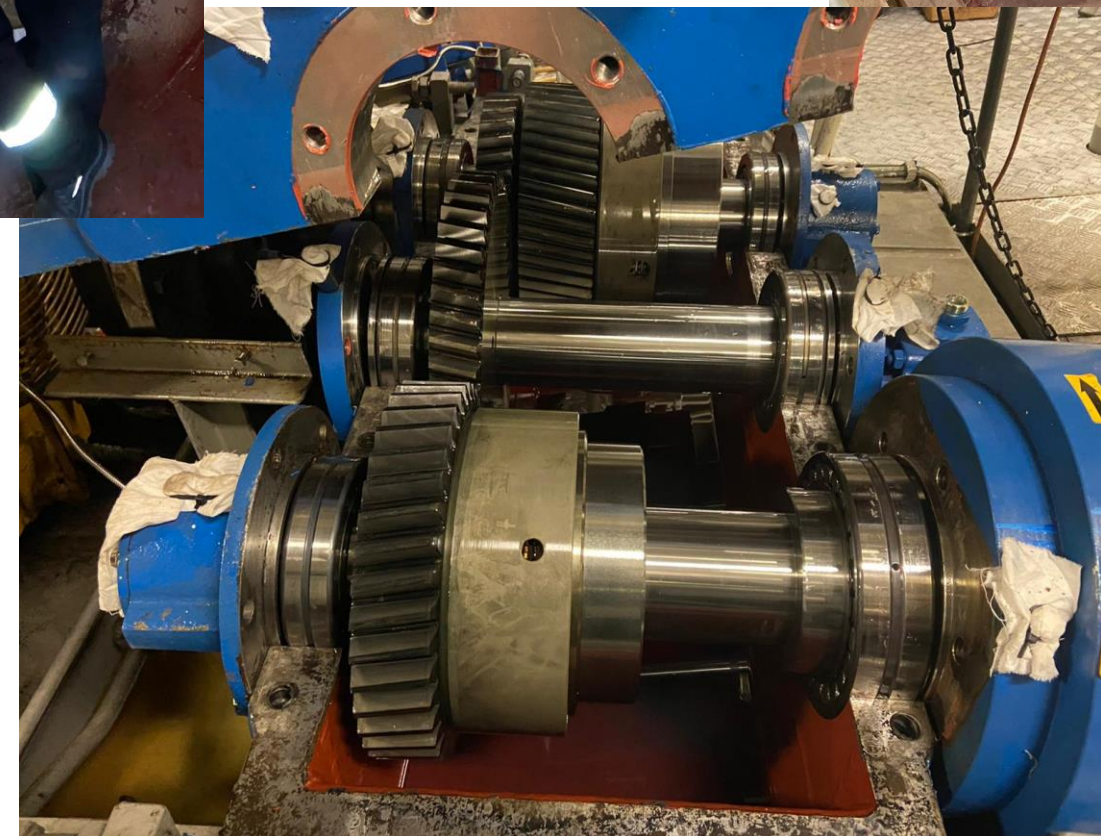
- OEM Technical Information
- OEM Tooling
- Diagnostic Equipment
- OEM Training

PROUD TO BE SUPPORTING:



BARTECH PROPULSION

- Propulsion systems
- Thrusters
- Seal Bonding
- Gear boxes
- Clutches
- Winches



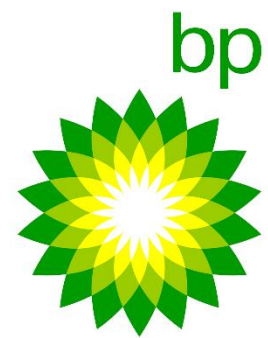
PROUD TO BE SUPPORTING:



MAERSK



Oil & Gas



Marine



Locomotive



Other

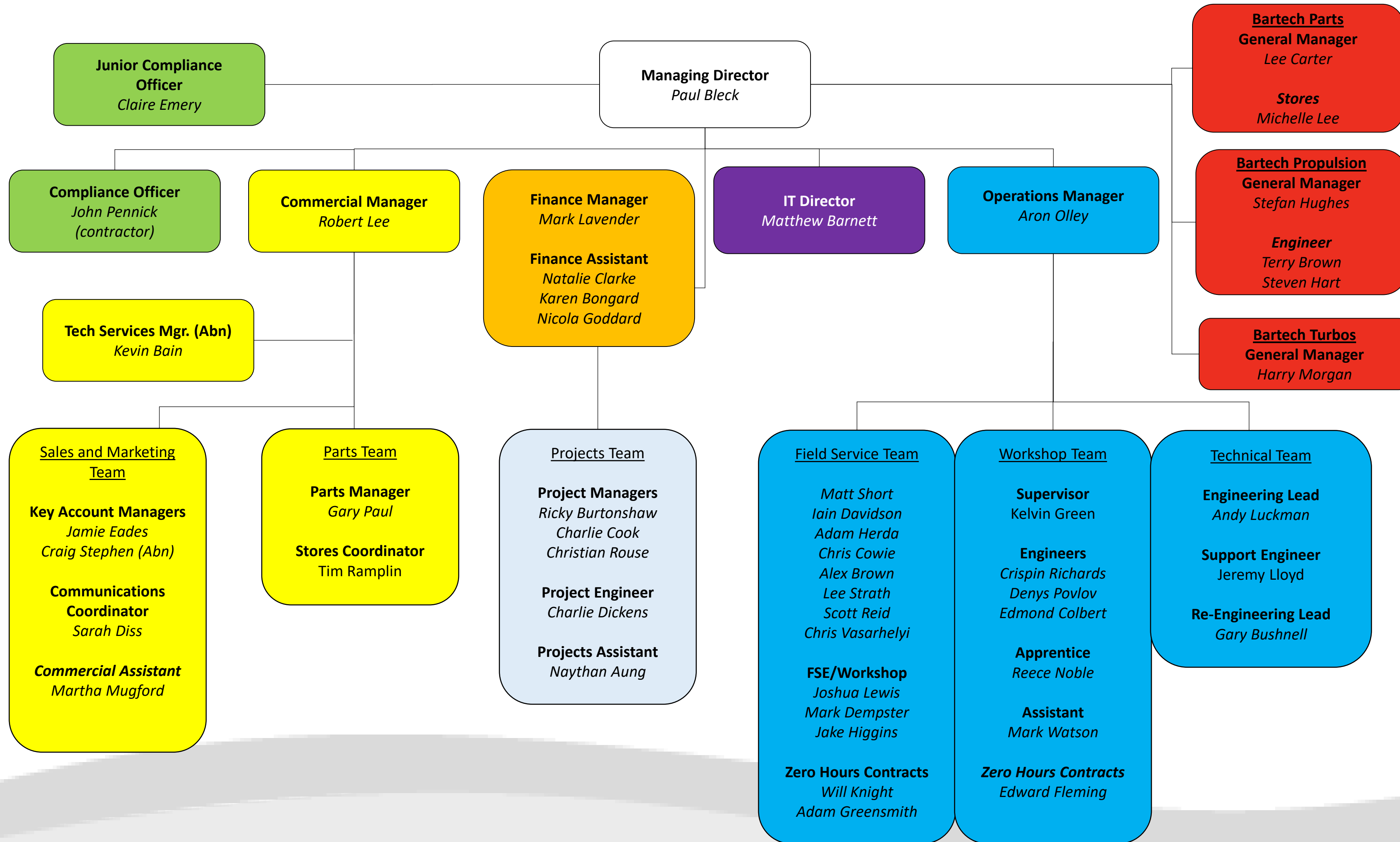


PROUD TO BE SUPPORTING:



MAERSK



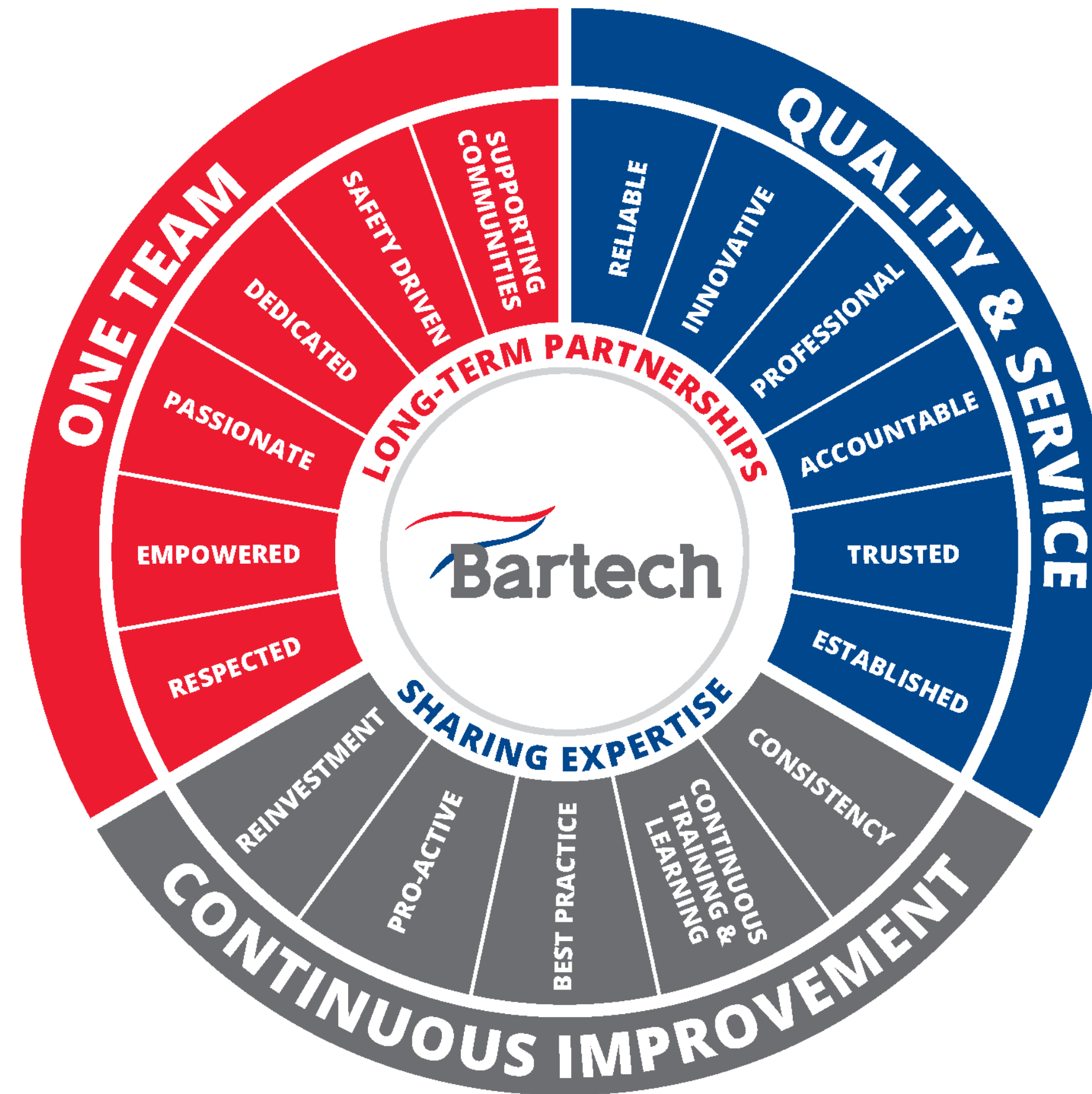


PROUD TO BE SUPPORTING:



MAERSK



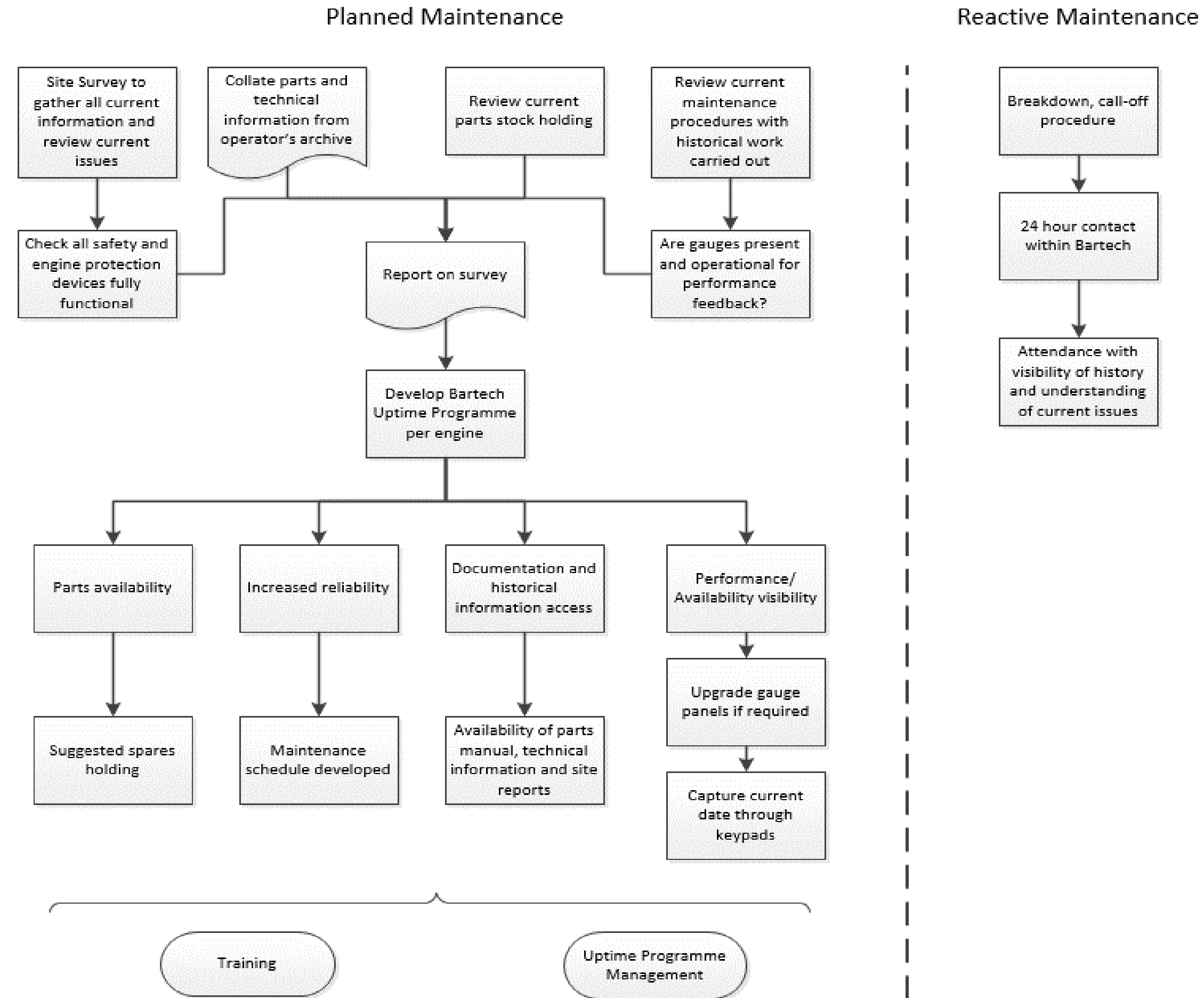


PROUD TO BE SUPPORTING:



MAERSK





PROUD TO BE SUPPORTING:



INNOVATIONS

- SOLAS Compliant Fuel Pipes
- Pre-heat Systems
- Engine Monitoring
- Emissions Reduction – Hydrogen Injection



DeUP Performance Summary for FP-1001 (Fire Pump) MTU 12V396 III Serial No: 5123456. Wk34 Test Run taken on Aug. 21, 2019, 4:30 p.m.

Oil		Water		Water Pressures	
Temp	Pressure	Temp	A Bank	B Bank	
98.0 °C	70.0 PSI	91.0 °C	51.0 PSI	49.0 PSI	

Exhaust Temperatures	Common	1	2	3	4	5	6
	A Bank	485.0 °C	475.0 °C	485.0 °C	478.0 °C	492.0 °C	482.0 °C
B Bank	480.0 °C	478.0 °C	483.0 °C	486.0 °C	472.0 °C	482.0 °C	473.0 °C

Diesel Engine Uptime Programme is Copyright 2018 Lapline Ltd / Bartech Marine Engineering. All Rights Reserved.

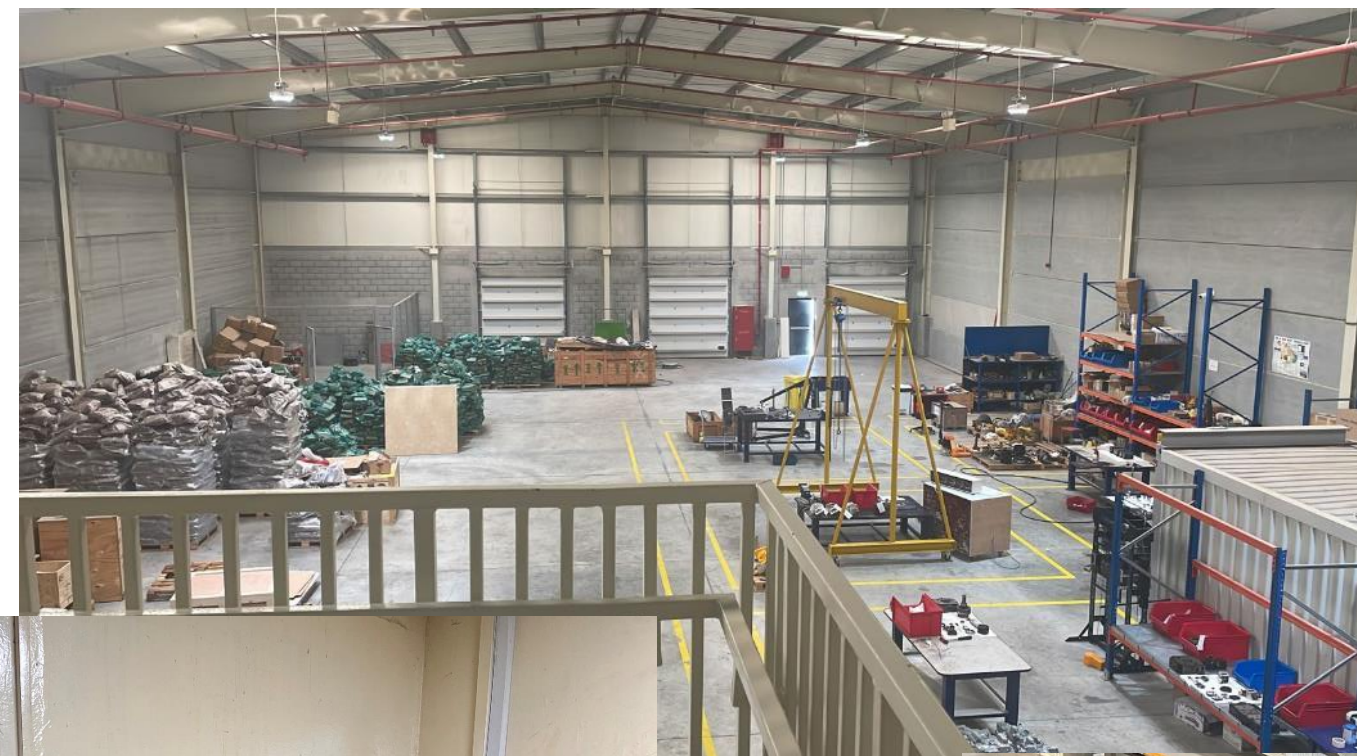


PROUD TO BE SUPPORTING:



MAERSK





ABU DHABI

- Local agent
- Dedicated workshops:
 - Jebel Ali
 - Abu Dhabi
 - Sharjah
- Overhaul facilities
- Cleaning and inspection areas

PROUD TO BE SUPPORTING:



MAERSK

